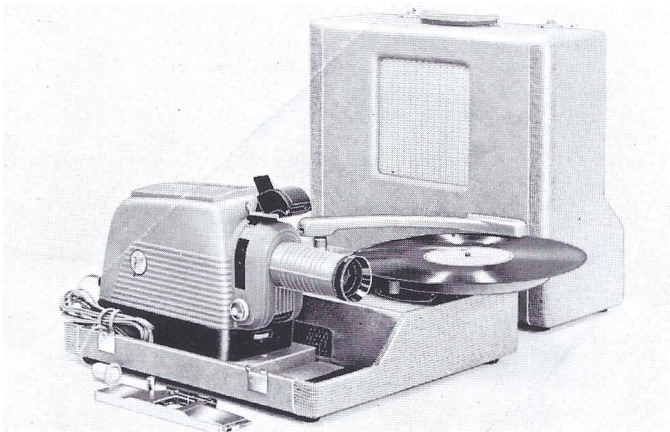




# VICTOR-SOUNDVIEW

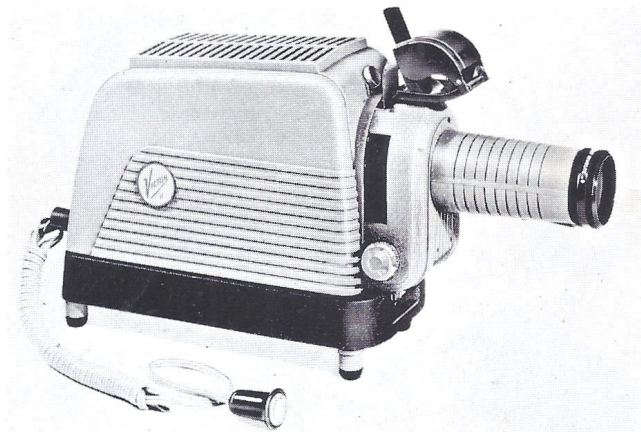
## America's Most Versatile Sound-Slidefilm Projectors

28. SEP. 1960



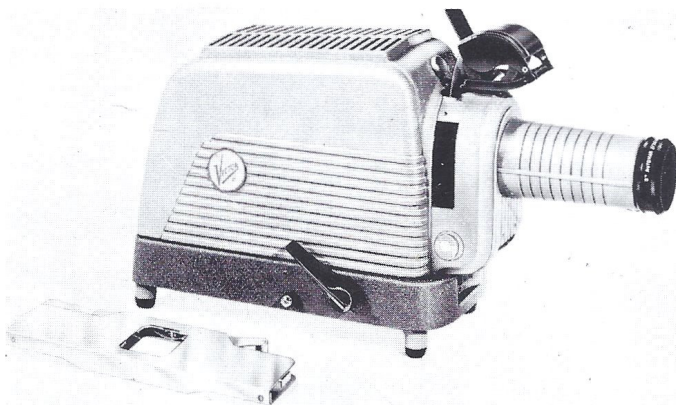
### Automatic or Manual Sound-Slidefilm Projectors — "SAT" and "SMT" Models

Victor-Soundview professional model sound-slidefilm equipment is available in both "SAT" and "SMT" series. The "SAT" series is designed for sound filmstrip programs with fully automatic film advance on either high frequency (7,000 cycle) or low frequency (30/50 cycle) signal. The "SMT" series is for programs with manual film advance on audible or cued signal, yet permits the addition of high or low frequency controller as optional equipment. Both series permit a choice of any Victor-Soundview "PS" model projector with remote pushbutton control. A single case accommodates projector, phonograph and speaker with an overall size of only 14½" x 8½" x 17".



### Remote Pushbutton Control Projectors — "PS" Models

Four Victor-Soundview projectors in the "PS" series feature a pushbutton remote control film advance that may be operated from anywhere in the room, permitting the lecturer to face his audience with complete freedom of movement. The mechanism utilizes a foolproof rotary solenoid which is an integral part of the projector, not an attachment. All projectors may be operated with "SAT" automatic, "SMT" manual, or "PB" manual phonographs as well as with automatic tape recorders. Models are PS65, 500-watt filmstrip and slide projector; PS45, 500-watt filmstrip projector; PS63, 300-watt filmstrip and slide projector; PS43, 300-watt filmstrip projector. Both of the combination filmstrip-slide projectors are equipped with a heavy-duty slide carrier for 2" x 2" and bantam slides, and can accommodate optional Airequist semiautomatic or fully automatic slide changers.



### Lever-Action Filmstrip and Slide Projector — "PhD" Model

Victor-Soundview "PhD" is a combination filmstrip and slide projector with lever-action film advance for instantaneous picture change. It offers simplicity of operation and will give years of rugged service. Its "spin-back" facility enables the operator to review any portion of the filmstrip at will. The "PhD" comes with a heavy-duty slide carrier for 2" x 2" and bantam slides, and accommodates semi-automatic or fully automatic Airequist slide changers as optional equipment. Projector has 500-watt light output and 4-element optical system assuring bright pictures with high definition in color and black and white. It may be used with "PB" portable phonograph for cued or audible signal sound filmstrip programs.

## ONLY VICTOR-SOUNDVIEW HAS ALL THESE FEATURES

- Lens** — highest quality 5" f:3.5 Automar projection lens.
- Threading** — simple push-down filmstrip threading and positive spring-lock "no-slip" framing.
- Film review** — any portion of film can be reviewed quickly and conveniently by using the "spin-back" feature.
- Change from filmstrip to slide** — accomplished in seconds.
- Projection lamp** — standard T-10 medium pefocused lamps.
- Optical system** — high-grade 4-element system consisting of polished Pyrex mirror, Pyrex rear condenser, heat-resistant flint glass, Pyrex front condenser.
- Built to last** — die-cast aluminum and all-metal construction throughout mean years of rugged, dependable use.
- Protects film** — ceramic edge glass pressure plates protect film from scratches.
- Cool running** — fan cooling system is highly efficient, making it impossible to burn fingers or damage film.

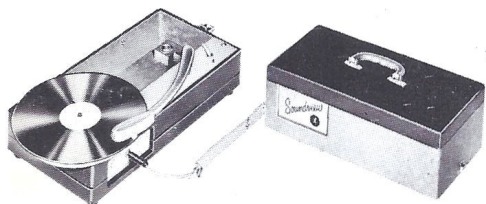
# WHY SLIDEFILM PROGRAMS GROW BEST WITH VICTOR-SOUNDVIEW EQUIPMENT

The slidefilm equipment you choose will have an important bearing on the successful growth of your program. Victor-Soundview actually encourages program growth because it is the *only* equipment that permits you to start with a basic projector and gradually build up to fully automatic sound programs by adding a component at a time. For example, you can start with any of the four "PS" pushbutton projectors for silent programs. Then add sound with the "SMT" phonograph. And finally, add high or low frequency controller to the phonograph for fully automatic film advance. Victor-Soundview equipment encourages program growth

in other important ways, too. It is the *only* equipment that allows separate use of projector and phonograph — that features a detachable speaker which may be placed with the screen where it belongs — that offers a 500-watt projector model for 2 x 2 and bantam slides as well as filmstrip.

You get years of dependable service from Victor-Soundview equipment because it is precision-built by Kalart to the same rigid specifications as famous Victor 16mm sound projectors. No other slidefilm equipment offers higher quality, more advanced features, or greater versatility for program growth than Victor-Soundview.

## ADD SOUND TO ANY VICTOR-SOUNDVIEW PROJECTOR



### "PB" Portable Phonograph

The "PB" is the all-in-one portable phonograph that

can be combined with any Victor-Soundview projector, as original equipment or later as the budget permits. This is the smallest, most compact phonograph for audible signal or cued sound filmstrip programs. It has a 4-speed turntable, universal phonograph cartridge for standard or microgroove recordings, 2-watt amplifier and separate tone and volume controls. Sound is crisp and clear. Carrying case has space for projector, optional roll-up screen, cords, filmstrips, spare bulb — and weighs just 12 pounds.

### "SAT" and "SMT" Phonographs

These models may be combined with any Victor-Soundview

"PS" projector to show sound filmstrip programs with automatic or manual

film advance. The automatic model "SAT" incorporates either high or low frequency controller while the manual "SMT" permits the addition of a controller as optional equipment. Phonograph has 4-speed turntable, universal cartridge for standard or micro groove recordings, accepts records up to 16" diameter. Features separate tone and volume controls for 2-watt amplifier and manual or automatic operation switch. Eight-inch speaker mounted in detachable lid is supplied with a 25-foot cord and may be placed in front of audience near screen for best effect.



## ACCESSORIES FOR VICTOR-SOUNDVIEW PROJECTORS

**CONTROLLERS** — high or low frequency for conversion to automatic operation.

**CARRYING CASES** — canvas case for "SAT" and "SMT" models; case for all projector models; large case for projector and Airequipt accessories.

**SLIDE CARRIER** — for paper, cardboard or glass mounted slides; holds 2 slides, push and pull operation.

**AIREQUIPT ACCESSORIES** — slide carrier with adapter and one magazine, accommodates 36-2" x 2" slides; remote control unit for pushbutton control of Airequipt slide carrier; Airequipt P87 adapter; Airequipt magazine.

**ROLL-UP SCREEN** — picture area 11½" x 15"; fits in case of "PB" portable phonograph.

**PUSHBUTTON CABLES** — 9, 25, and 50 foot pushbutton cables, and 25 foot extension.

**SPEAKER CABLES** — 25 and 50 foot extension speaker cables.

**PHONO CARTRIDGE** — astatic ceramic cartridge with universal needle.

**PROJECTION LAMPS** — 300-watt and 500-watt T-10 medium prefocused base lamps.

**LENSES** — 3" f:3, 5" and 7" f:4.9 Automar lenses — anastigmat, coated and color corrected.

VICTOR ANIMATOGRAPH CORPORATION  
A Division of **KALART**  
PLAINVILLE, CONNECTICUT